



## Virginia Corn Silage Hybrid Trials in 2021

*Authored by W. Thomason, Extension Agronomist, Grains, School of Plant and Environmental Sciences, Virginia Tech, C. Bishop, Research Specialist Senior, School of Plant and Environmental Sciences, Virginia Tech; E. Rucker, Research Associate, School of Plant and Environmental Sciences, Virginia Tech;*

*Other contributors: David Yutzy, owner, Windcrest Holsteins; Doug Horn, Extension Agent, ANR, Crop and Soil Sciences, Rockingham County; Greg Lillard, Farm Manager, Northern Piedmont Center, School of Plant and Environmental Sciences; Ned Jones, Farm Manager, Southern Piedmont Agricultural Research and Extension Center; Phil Blevins, Extension Agent, ANR, Crop and Soil Sciences, Washington County*

### Table of Contents

Introduction (yield differences, hybrid selection).....	2
Companies participating in the 2021 Virginia Tech Corn Silage Hybrid Trials.....	3
2021 Virginia Tech Corn Silage Hybrid Trial plot information .....	4
Table 1. List of Hybrids in the 2021 Virginia Tech Corn Silage Hybrid Test.....	5
Table 2. Handy Bt Trait Table .....	7
Table 3. Multi-year, multi-site relative ton per acre (Yield).....	9
Table 4. Multi-year, multi-site relative milk per ton (Quality) .....	12
Table 5. Multi-year, multi-site relative milk per acre (Yield x Quality).....	14
Table 6. 2021 Corn silage test results at the Southern Piedmont site.....	17
Table 7. Two-year average corn silage test results (2020 and 2021) Southern Piedmont.....	19
Table 8. 2021 Corn silage test results at the Northern Piedmont site .....	20
Table 9. Two-year average corn silage test results (2020 and 2021) at the Northern Piedmont site .....	22
Table 11. 2021 Corn silage test results at the Shenandoah Valley site .....	23
Table 12. Two-year average corn silage test results (2020 and 2021) Shenandoah Valley site.....	25
Table 14. 2021 Corn silage test results at the Southwest site.....	26
Table 15. Two-year average corn silage test results (2020 and 2021) at the Southwest site .....	28
Figure 1. Average relative yield versus quality across sites in 2021 .....	29
Figure 2. High-yielding and high-quality hybrids in at least 3 site/year combinations.....	29

## Introduction

This report contains the results for performance trials from commercial corn hybrids produced for silage at four locations in Virginia in 2021 as well as two- and three-year average performance, when available. In order to avoid problems with comparisons over sites and years, multi-year yields are presented as a percentage of the total called relative yield at that particular site-year combination. All locations were planted with a Wintersteiger PlotKing 2600 planter and harvested with commercial silage equipment. Yields are presented on a dry matter and 35% dry matter basis for comparison. Quality analysis was performed using a Foss NIR XDS Rapid Content Analyzer. All hybrids entered in the Virginia trials were submitted for testing by commercial companies. The locations at which particular hybrids were entered were specified by the company. Companies entering hybrids were charged a fee for each hybrid per location to support the Virginia Corn Silage Performance Trials.

## Yield Differences

Experimental plots vary in yield and other measurements due to location in the field and other factors which cannot be controlled. Statistics given in the tables are intended to help the reader make valid comparisons between hybrids. The magnitude of difference due to uncontrollable variation has been computed for the data and is listed at the bottom of columns as the LSD (.10) (least significant difference with 90% confidence). Differences less than the LSD are assumed not to be real differences with 90% confidence.

## Hybrid Selection

### **Multi-year results are more reliable than single-year results.**

When making hybrid selections it is important to realize that hybrids differ in their performance under differing environments. Some hybrids are more adapted to a wide range of environments. Hybrid performance may differ with year and location variations of rainfall, temperature, pests and other environmental variables. In these experiments, many hybrids have essentially the same yield, and great care should be taken in interpreting the results of a single year's tests, especially at only one location.

For these reasons it is important, whenever possible, to also look at a hybrid's average yield across locations when making selections. Multi-year averages give greater confidence to hybrid performance decisions. Relative yield tables compare the yield of a hybrid to the average yield of all hybrids in the test. These tables are an excellent summary of yield potential compared to other hybrids.

### **Understanding Relative Yield**

Companies entering silage hybrids decide which hybrids are planted at which locations. In 2020, some hybrids were planted at all four locations and others at only one or two sites.

Combining and comparing absolute yield and other results from multiple sites is inappropriate when not all hybrids are planted at all locations. For example, one hybrid might have an unfair advantage in such a comparison because it was tested only at sites with ideal growing conditions. Another hybrid tested at sites with less-than-ideal growing conditions would have yields that tended to be lower. In this example, it would be difficult to determine whether yield differences were because of differences in genetic yield potential or simply because of differences in the environmental conditions under which they were tested. The solution is to compare hybrids based on relative yields rather than absolute yields.

To calculate relative yield, the yield for each hybrid at each site is divided by the average yield for all hybrids tested at that same site and multiplied by 100. Once each hybrid at each site has been assigned a relative yield, comparisons can be made between hybrids tested at the same site or different sites. For hybrids tested at multiple sites, we can also calculate a multi-site relative yield average.

Relative yields of 100 indicate hybrids that were average performers. Relative yields greater than 100 indicate yields above-average. Relative yields less than 100 indicate yields below-average. The magnitude of the relative yield numbers indicates how far above or below average a hybrid performed. For example, a hybrid with a relative yield of 110 yielded 10% above the average yield for all hybrids at that site.

### Selecting hybrids for both yield and quality

Milk2006 is used to condense multiple corn silage quality and digestibility factors into one easy-to-compare “milk per ton” number. This system also generates a “milk per acre” rating for each hybrid, calculated by multiplying yield (tons per acre) by quality (pounds of milk per ton). The same problem described above for multi-site yield comparisons exists for yield by quality comparisons: not all hybrids were tested at all sites. Therefore, relative quality and relative yield x quality ratings were calculated.

Milk2006 is a system developed by University of Wisconsin researchers to simplify quality comparisons between corn silage samples. Included in the analysis are variety identification, kernel processing, dry matter, crude protein, NDF, in-vitro NDF digestibility, starch percent and yield per acre. Compared to Milk2000, Milk2006 values more accurately address the effects of fiber digestibility on silage quality. Milk2006 has proven to more accurately reflect actual milk production than earlier versions of the program.

Milk2006 was designed solely as an index to be used when making quality comparisons between silage samples or hybrids. Milk per ton or milk per acre numbers should not be used to predict actual milk production on your farm. Milk per ton is more accurate at predicting cow performance since it includes quality factors that affect milk production. Milk per acre allows consideration of yield as well as quality factors.

### Use other information

Consider as much other information as possible from other independent sources before selecting hybrids. Look for agronomic as well as silage quality data.

## Companies Participating in the 2021 Virginia Tech Corn Silage Hybrid Trials

Company	Brand	Address
Augusta Seed	Augusta Seed	PO Box 899, Verona, VA 24482
Corteva Agriscience Ag. Division Dow/Dupont	Pioneer	7200 NW 62nd Ave., Johnston, IA 50131
Erwin-Keith, Inc.	Progeny Ag Products	1529 Hwy 193, Wynne, AR 72396
GROWMARK	FS	308 NE Front Street, Milford, DE 19963
King's AgriSeeds	Redtail	1828 Freedom Rd #101, Lancaster, PA 17601
Mid-Atlantic Seeds	Mid-Atlantic	204 St. Charles Way #163, York, PA 17402
Nutrien Ag Solutions	Dyna-Gro	396 Washington St., Boydton, VA 23917
Partners Brand Seed Co.	Partners Brand	4610E State Rd 120, Howe, IN 46746
Seed Consultants, Inc.	Seed Consultants	648 Miami Trace Rd., Washington Court House, OH 43160
Seedway, LLC	Seedway	1734 Railroad Pl, Hall, NY 14463
Syngenta Seeds	NK Brand	4013 Fairmount Pike, Signal Mountain, TN 37377

# 2021 Virginia Tech Corn Silage Hybrid Trials Plot Information

(Rates are on a per acre basis.)

## **Blackstone (Southern Piedmont Agricultural Research & Extension Center)**

Planted: April 9, 2021 conventional tillage  
Harvested: August 2, 2021  
Pesticide: 1 pt Brawl + 1 qt atrazine April 17, 2020; 5 lb Force 3G® at planting  
Irrigation: 1" applied May 19 2021; 1" applied May 26, 2021  
Fertilizer: 1000 lb 10-10-10 pre-plant incorporated April 5, 2021; 17 gal 20-10-0-2S-.13B-.25Zn at planting; 80 lb N top-dressed using UAN May 18,2021  
Population: 34,000 ppa  
Plot Size: 2 rows 25' x 30" 4 replications  
Soil Type: Appling sandy loam  
Cooperator: Ned Jones

## **Orange (Northern Piedmont Center)**

Planted: April 13, 2021 no-till  
Harvested: August 12, 2021  
Pesticide: 1.5 pt paraquat + 1 pt atrazine + 1.5 qt Lumax preplant; 5 lb Force 3G® at planting  
Irrigation: 1" applied 5/21/21; 1" applied 5/27/2001  
Fertilizer: 30-30-30 April 13, 2021; 17 gal 20-10-0-2S-.13B-.25Zn at planting; 70 lb N side-dressed May 24, 2021; 70 lb N side-dressed June 8, 2021;  
Population: 32,000 ppa  
Plot Size: 2 rows 25' x 30" 4 replications  
Soil Type: Davidson clay  
Cooperator: Greg Lillard

## **Shenandoah Valley (Timberville - Thanks to David Yutzy and Windcrest Holsteins)**

Planted: June 4, 2021 no-till after barley silage  
Harvested: September 29, 2021  
Pesticide: 1 qt glyphosate + 1 pt atrazine preplant, 3.6 pt Halex at V5.  
Fertilizer: 50 lb potash and 40 lb sulfur in January; 5,000 gallons dairy manure injected preplant; 17 gal 15- 15-0-2S-.13B-.25Zn at planting; 75 lb N from urea side-dressed  
Population: 31,643 ppa  
Cooperators: Doug Horn and David Yutzy

## **Washington County (Southwest Virginia Agricultural Research & Extension Center)**

Planted: May 12, 2021  
Harvested: September 17, 2021  
Pesticide: 28 oz atrazine + 3 qt Acuron® + 1 qt glyphosate pre-plant; 5 lb Force 3G® at planting  
Fertilizer: 170-60-100-25S preplant; 17 gal 15-15-0-2S-.13B-.25Zn at planting; 100 lb N side-dressed  
Plot Size: 2 rows 35' x 30" 4 replications  
Soil Type: Wyrick-Marbie silt loam  
Cooperator: Phil Blevins

Table 1. List of hybrids in the 2021 Virginia Tech Corn Silage Hybrid Test.

<b>Company</b>	<b>Brand</b>	<b>Hybrid</b>	<b>DTM<sup>1</sup></b>	<b>Seed Treatment</b>	<b>Trait Package</b>	<b>OBS<sup>2</sup></b>
Augusta Seed	Augusta	A5663	113	Cruiser Maxx® 250	Agrisure 3000GT	1
Augusta Seed	Augusta	A1367	117	Cruiser Maxx® 250	Agrisure Duracade® 5222 E-Z	1
Augusta Seed	Augusta	A9967	117	Cruiser Maxx® 250	Agrisure 3000GT	3
Augusta Seed	Augusta	A6362	112	Cruiser Maxx® 250	Agrisure Duracade® 5122 E-Z	1
Augusta Seed	Augusta	A4567	117	Cruiser Maxx® 250	Agrisure Duracade® 5222 E-Z	1
Nutrien Ag Solutions	Dyna-Gro	D58VC65	118	Acceleron® 500/Poncho® 500/VOTiVO®500 EDC	VT Double PRO®	1
Nutrien Ag Solutions	Dyna-Gro	D55VC80	115	Acceleron® 500/Poncho® 500/VOTiVO®500 EDC	VT Double PRO®	1
Nutrien Ag Solutions	Dyna-Gro	D57VC17	117	Acceleron® 500/Poncho® 500/VOTiVO®500 EDC	VT Double PRO®	1
Nutrien Ag Solutions	Dyna-Gro	D57TC29	117	Acceleron® 500/Poncho® 500/VOTiVO®500 EDC	Trecepta®	1
GROWMARK	FS	FS 62ZX1 RIB	112		SmartStax® RIB Complete®	4
GROWMARK	FS	FS 6406X RIB	114		SmartStax® RIB Complete®	4
GROWMARK	FS	FS 6595X RIB	115		SmartStax® RIB Complete®	4
GROWMARK	FS	FS 65R87SS	115		SmartStax® RIB Complete®	4
GROWMARK	FS	FS 64SX1 RIB	114		SmartStax® RIB Complete®	4
GROWMARK	FS	FS 6818X RIB	118		SmartStax® RIB Complete®	4
Mid-Atlantic Seeds	Mid-Atlantic	MA8128VT2PRIB	112	Acceleron® 250	VT Double PRO® RIB Complete	1
Mid-Atlantic Seeds	Mid-Atlantic	MA5166GT3VIP	116	Cruiser Maxx® 250	Agrisure Viptera® 3111	1
Mid-Atlantic Seeds	Mid-Atlantic	MA8141DGVT2PRIB	114	Acceleron® 250	DroughtGard® VT Double PRO® RIB Complete®	1
Mid-Atlantic Seeds	Mid-Atlantic	MA5155GT3VIP	115	Cruiser Maxx® 250	Agrisure Viptera® 3111	1
Mid-Atlantic Seeds	Mid-Atlantic	MA8158SSRIB	115	Acceleron® 250	SmartStax® RIB Complete®	1
Mid-Atlantic Seeds	Mid-Atlantic	MA5161DCVIPEZ	116	Cruiser Maxx® 250	Agrisure Duracade® 5222 E-Z	1
Mid-Atlantic Seeds	Mid-Atlantic	MA5165HDGT3	116	Cruiser Maxx® 250	Agrisure 3000GT	1
Mid-Atlantic Seeds	Mid-Atlantic	MA5083DCEZ	108	Cruiser Maxx® 250	Agrisure Duracade® 5122 E-Z	1
Mid-Atlantic Seeds	Mid-Atlantic	MA7103HDDCEZ	110	Cruiser Maxx® 250	Agrisure Duracade® 5122 E-Z	1
Mid-Atlantic Seeds	Mid-Atlantic	MA5101VIP3330	110	Cruiser Maxx® 250	Agrisure Viptera® 3330 E-Z Refuge	1
Mid-Atlantic Seeds	Mid-Atlantic	MA7144HDDCEZ	114	Cruiser Maxx® 250	Agrisure Duracade® 5122 E-Z	1
Syngenta Seeds	NK Brand	NK1677-3110	116	Cruiser Maxx® 250	Agrisure Viptera® 3110	4
Syngenta Seeds	NK Brand	NK1748-3110	117	Cruiser Maxx® 250	Agrisure Viptera® 3110	4
Syngenta Seeds	NK Brand	NK1661-3120A	116	Cruiser Maxx® 250	Agrisure Viptera® 3120 E-Z Refuge	4
Partners Brand	Partners	PB 11702	117	Alert 2500™	conventional	1

Seed Co.	Brand					
Partners Brand Seed Co.	Partners Brand	PB 8580	115	Alert 2500™	Agrisure Viptera® 3111	1
Partners Brand Seed Co.	Partners Brand	PB 8600	116	Alert 2500™	Agrisure Viptera® 3110	1
Corteva Agriscience	Pioneer Brand	P0921AMXT	109	Poncho® 1250/VOTiVO®	AcreMax® XTreme	4
Corteva Agriscience	Pioneer Brand	P1380Q	113	Poncho® 1250/VOTiVO®	QROME®	4
Erwin-Keith Inc	Progeny Ag Products	PGY 8116SS	116	Poncho® 1250/VOTiVO®	SmartStax®	4
Erwin-Keith Inc	Progeny Ag Products	PGY 2118VT2P	118	Poncho® 1250/VOTiVO®	VT Double PRO®	4
King's AgriSeeds	Redtail	RT 65T09-D1	115	Cruiser Maxx® 250	Agrisure Duracade® 5122 E-Z	2
King's AgriSeeds	Redtail	RT 62T83	112	Cruiser Maxx® 250	Agrisure 3000GT	2
King's AgriSeeds	Redtail	RT 67T23	117	Cruiser Maxx® 250	Agrisure 3000GT	2
Seed Consultants	Seed Consultants	SC1158AM™	115	Poncho® 500/VOTiVO®	AcreMax®	4
Seed Consultants	Seed Consultants	SC1168AM™	116	Poncho® 500/VOTiVO®	AcreMax®	4
Seed Consultants	Seed Consultants	SC1188AM™	118	Poncho® 500/VOTiVO®	AcreMax®	4
Seed Consultants	Seed Consultants	SC1141AM™	114	Poncho® 1250/VOTiVO®	AcreMax®	4
Seed Consultants	Seed Consultants	SC1170AM™	117	Poncho® 1250/VOTiVO®	AcreMax®	4
Seed Consultants	Seed Consultants	SC1112AM™	111	Poncho® 1250/VOTiVO®	AcreMax®	4
Seed Consultants	Seed Consultants	SC1122Q™	112	Poncho® 1250/VOTiVO®	QROME®	4
Seedway, LLC	Seedway	SW8100 GENSS(RIB)	117	Acceleron® 500/Poncho® 500/VOTiVO®500 EDC	SmartStax® RIB Complete®	4
Seedway, LLC	Seedway	SW 1579SS	115	Acceleron® 500/Poncho® 500/VOTiVO®500 EDC	SmartStax® RIB Complete®	4
Seedway, LLC	Seedway	SW6760 GENSS(RIB)	112	Acceleron® 500/Poncho® 500/VOTiVO®500 EDC	SmartStax® RIB Complete®	4
Seedway, LLC	Seedway	SW6540 VT2P(RIB)	107	Acceleron® 500/Poncho® 500/VOTiVO®500 EDC	VT Double PRO® RIB Complete	4

<sup>1</sup> Days to maturity (DTM) provided by company; differences in maturity rating methods may exist.

<sup>2</sup> Number of observations hybrid occurred; the greater the observations, the more reliable the data. Note: Shaded hybrids indicate hybrids entered in less than 3 locations. Hybrids are sorted by Brand, then DTM.

Table 2. The Handy Bt Trait Table for U.S. corn production, updated February 2021 (thanks to Chris DiFonzo, Michigan State University, difonzo@msu.edu)

	Bt protein(s) (or other trait) in package	Marketed for control of:											Resistance confirmed to the combination of Bts in package (check local situation)	Herbicide trait			Non-Bt Refuge % (cornbelt)	
		B C W	C E W	E C B	F A W	S B	S C B	S W C B	T A W	W B C	W C R	G R		L L	E			
AcreMax (AM)	Cry1Ab Cry1F	x	x	x	x	x	x	x	x					CEW FAW WBC	x	x		5% in bag
AcreMax CRW (AMRW)	Cry34/35Ab1												x	NCR WCR	x	x		10% in bag
AcreMax1 (AM1)	Cry1F Cry34/35Ab1	x		x	x	x	x	x	x				x	ECB FAW SWB WBC NCR WCR	x	x		10% in bag 20% ECB
AcreMax Leptra (AML)	Cry1Ab Cry1F Vip3A	x	x	x	x	x	x	x	x	x					x	x		5% in bag
AcreMax TRIsect (AMT)	Cry1Ab Cry1F mCry3A	x	x	x	x	x	x	x	x				x	CEW FAW WBC WCR	x	x		10% in bag
AcreMax Xtra (AMX)	Cry1Ab Cry1F Cry34/35Ab1	x	x	x	x	x	x	x	x				x	CEW FAW WBC NCR WCR	x	x		10% in bag
AcreMax Xtreme (AMXT)	Cry1Ab Cry1F mCry3A Cry34/35Ab1	x	x	x	x	x	x	x	x				x	CEW FAW WBC WCR	x	x		5% in bag
Agrisure 3010 (BR)	Cry1Ab		x	x				x	x					CEW	x	x		20%
Agrisure 3000GT & 3011A	Cry1Ab mCry3A		x	x				x	x				x	CEW WCR	x	x		20%
Agrisure Viptera 3110 (VR)	Cry1Ab Vip3A	x	x	x	x	x	x	x	x	x					x	x		20%
Agrisure Viptera 3111 (A4)	Cry1Ab Vip3A mCry3A	x	x	x	x	x	x	x	x	x	x			WCR	x	x		20%
Agrisure 3120 E-Z Refuge (BZ)	Cry1Ab Cry1F	x	x	x	x	x	x	x	x					CEW FAW WBC	x			5% in bag
Agrisure 3122 E-Z Refuge	Cry1Ab Cry1F mCry3A Cry34/35Ab1	x	x	x	x	x	x	x	x				x	CEW FAW WBC WCR	x			5% in bag
Agrisure Viptera 3220 E-Z (VZ)	Cry1Ab Cry1F Vip3A	x	x	x	x	x	x	x	x	x					x			5% in bag
Agrisure Viptera 3330 E-Z	Cry1Ab Vip3A Cry1A.105/Cry2Ab2	x	x	x	x	x	x	x	x	x					x			5% in bag
Agrisure Duracade 5122 E-Z (D1)	Cry1Ab Cry1F mCry3A eCry3.1Ab	x	x	x	x	x	x	x	x				x	CEW FAW WBC WCR	x			5% in bag
Agrisure Duracade 5222 E-Z (D2)	Cry1Ab Cry1F Vip3A mCry3A eCry3.1Ab	x	x	x	x	x	x	x	x	x	x			WCR	x			5% in bag
Agrisure Duracade 5332-E-Z	Cry1A.105/Cry2Ab2 Cry1Ab Vip3A mCry3A eCry3.1Ab	x	x	x	x	x	x	x	x	x	x			WCR	x	x		5% in bag
Herculex I (HXI)	Cry1F	x		x	x	x	x	x	x					ECB FAW SWB WBC	x	x		20%
Herculex RW (HXRW)	Cry34/35Ab1												x	NCR WCR	x	x		20%
Herculex XTRA (HXX)	Cry1F Cry34/35Ab1	x		x	x	x	x	x	x				x	ECB FAW SWB WBC NCR WCR	x	x		20%
Intrasect (YHR)	Cry1Ab Cry1F	x	x	x	x	x	x	x	x					CEW FAW WBC	x	x		5%
Intrasect TRIsect (CYHR)	Cry1Ab Cry1F mCry3A	x	x	x	x	x	x	x	x				x	CEW FAW WBC WCR	x	x		20%
Intrasect Xtra (YXR)	Cry1Ab Cry1F Cry34/35Ab1	x	x	x	x	x	x	x	x				x	CEW FAW WBC NCR WCR	x	x		20%
Intrasect Xtreme (CYXR)	Cry1Ab Cry1F mCry3A Cry34/35Ab1	x	x	x	x	x	x	x	x				x	CEW FAW WBC WCR	x	x		5%
Leptra (VYHR)	Cry1Ab Cry1F Vip3A	x	x	x	x	x	x	x	x	x					x	x		5%
Powercore <sup>a</sup> (PW) PW Refuge Advanced <sup>b</sup> (PWRA)	Cry1A.105/Cry2Ab2 Cry1F	x	x	x	x	x	x	x	x					CEW WBC	x	x		<sup>a</sup> 5% <sup>b</sup> 5% in bag
Powercore Enlist (PWE)	Same as Powercore	x	x	x	x	x	x	x	x					CEW WBC	x	x	x	5% in bag
QROME (Q)	Cry1Ab Cry1F mCry3A Cry34/35Ab1	x	x	x	x	x	x	x	x				x	CEW FAW WBC WCR	x	x		5% in bag
SmartStax <sup>a</sup> (SX,STX or SS) STX Refuge Advanced <sup>b</sup> (SXRA) STX RIB Complete <sup>b</sup> (STXRIB)	Cry1A.105/Cry2Ab2 Cry1F Cry3Bb1 Cry34/35Ab1	x	x	x	x	x	x	x	x				x	CEW WBC NCR WCR	x	x		<sup>a</sup> 5% <sup>b</sup> 5% in bag
SmartStax Enlist (SXE)	Same as SmartStax	x	x	x	x	x	x	x	x				x	Same as SmartStax	x	x	x	5% in bag
SmartStax Pro *2022 commercialization date	Same as SmartStax + DvSnf7 dsRNA	x	x	x	x	x	x	x	x				x	CEW WBC	x	x		5% in bag
Trecepta <sup>a</sup> (TRE) Trecepta RIB Complete <sup>b</sup> (TRERIB)	Cry1A.105/Cry2Ab2 Vip3A	x	x	x	x	x	x	x	x	x					x			<sup>a</sup> 5% <sup>b</sup> 5% in bag
TRISect (CHR)	Cry1F mCry3A	x		x	x	x	x	x	x				x	ECB FAW SWB WBC WCR	x	x		20%
VT DoublePRO <sup>a</sup> (VT2P) VT2P RIB Complete <sup>b</sup> (VT2PRIB)	Cry1A.105/Cry2Ab2		x	x	x	x	x	x	x					CEW	x			<sup>a</sup> 5% <sup>b</sup> 5% in bag
VT TriplePRO <sup>c</sup> (VT3P) VT3P RIB Complete <sup>d</sup> (VT3PRIB)	Cry1A.105/Cry2Ab2 Cry3Bb1		x	x	x	x	x	x	x				x	CEW NCR WCR	x			<sup>c</sup> 20% <sup>d</sup> 10% in bag
Yieldgard Corn Borer (YGCB)	Cry1Ab		x	x				x	x					CEW	x			20%

See bag tag. E-Z=no E-Z1=yes

Yieldgard Rootworm (YGRW)	Cry3Bb1										x	NCR WCR	x			20%	
Yieldgard VT Triple (VT3)	Cry1Ab Cry3Bb1		x	x				x	x			x	CEW NCR WCR	x			20%
VT DoublePRO <sup>a</sup> (VT2P) VT2P RIB Complete <sup>b</sup> (VT2PRIB)	Cry1A.105/Cry2Ab2		x	x	x	x	x	x	x				CEW	x			<sup>a</sup> 5% <sup>b</sup> 5% in bag
VT TriplePRO <sup>c</sup> (VT3P) VT3P RIB Complete <sup>d</sup> (VT3PRIB)	Cry1A.105/Cry2Ab2 Cry3Bb1		x	x	x	x	x	x	x			x	CEW NCR WCR	x			<sup>c</sup> 20% <sup>d</sup> 10% in bag
Yieldgard Corn Borer (YGCB)	Cry1Ab		x	x				x	x				CEW	x			20%
Yieldgard Rootworm (YGRW)	Cry3Bb1											x	NCR WCR	x			20%
Yieldgard VT Triple (VT3)	Cry1Ab Cry3Bb1		x	x				x	x			x	CEW NCR WCR	x			20%
VT DoublePRO <sup>a</sup> (VT2P) VT2P RIB Complete <sup>b</sup> (VT2PRIB)	Cry1A.105/Cry2Ab2		x	x	x	x	x	x	x				CEW	x			<sup>a</sup> 5% <sup>b</sup> 5% in bag
VT TriplePRO <sup>c</sup> (VT3P) VT3P RIB Complete <sup>d</sup> (VT3PRIB)	Cry1A.105/Cry2Ab2 Cry3Bb1		x	x	x	x	x	x	x			x	CEW NCR WCR	x			<sup>c</sup> 20% <sup>d</sup> 10% in bag
Yieldgard Corn Borer (YGCB)	Cry1Ab		x	x				x	x				CEW	x			20%
Yieldgard Rootworm (YGRW)	Cry3Bb1											x	NCR WCR	x			20%
Yieldgard VT Triple (VT3)	Cry1Ab Cry3Bb1		x	x				x	x			x	CEW NCR WCR	x			20%

### Abbreviations used in the Trait Table

#### Insect targets

BCW black cutworm CEW corn earworm CR corn rootworm  
(N- Northern, W- Western) ECB European corn borer  
FAW fall armyworm SB stalk borer  
SCB sugarcane borer  
SWCB southwestern corn bore TAW true armyworm  
WBC western bean cutworm

#### Herbicide tolerance

E Enlist - 2,4-D and 'FOPs'

G *glyphosate*

R Roundup Ready 2 - *glyphosate*

LL Liberty Link - *glufosinate*



Table 3. Multi-year, multi-site relative ton per acre (yield).

Brand	Hybrid	DTM per Co. <sup>1</sup>	Shenandoah Valley		Northern Piedmont		Southern Piedmont		Southwest / Mountain		Multi-Site Average	Number of Obs. <sup>2</sup>
			2021	2020	2021	2020	2021	2020	2021	2020		
-----Relative Ton per Acre <sup>3</sup> -----												
Mid-Atlantic	MA5083DCEZ	108	138	* ---	---	---	---	---	---	---	138	1
Mid-Atlantic	MA5101VIP3330	110	123	* ---	---	---	---	---	---	---	123	1
Pioneer Brand	P1380Q	113	124	* 145	* 83	120	* 124	* 104	106	* 91	112	8
Dyna-Gro	D55VC80	115	---	---	113	* 106	* ---	---	---	---	110	2
Redtail	RT 62T83	112	125	* ---	93	---	---	---	---	---	109	2
Dyna-Gro	D57TC29	117	---	---	---	---	109	---	---	---	109	1
Caverndale Farms	CF 859 VIP 3111	114	---	---	---	---	---	---	---	107	107	1
Pioneer Brand	P0921AMXT	109	107	* ---	100	---	99	---	121	* ---	107	4
Mid-Atlantic	MA8141DGVT2P	114	84	129	* ---	---	---	---	---	---	106	2
NK Brand	NK1748-3110	117	109	* 103	108	* ---	109	122	* 87	---	106	6
Seed Consultants	SC1112AM™	111	123	* ---	111	* ---	96	---	91	---	105	4
Seed Consultants	SCS 1158AM™	115	84	124	* 89	113	* 107	111	* 81	132	* 105	8
Dyna-Gro	D58VC65	118	---	---	---	---	106	103	---	---	105	2
Progeny Ag Products	PGY 8116SS	116	117	* ---	99	---	96	---	106	* ---	105	4
Progeny Ag Products	PGY 2118VT2P	118	106	* ---	112	* ---	103	---	95	---	104	4
Seed Consultants	SCS 1168AM™	116	80	106	111	* 96	121	96	113	* 109	104	8
Pioneer Brand	P1197AMXT	111	---	135	* ---	104	* ---	84	---	92	104	4
Augusta	A4567	117	104	* ---	---	---	---	---	---	---	104	1
FS	FS 6818X RIB	118	118	* ---	97	---	96	---	104	* ---	104	4
Augusta	A5663-3000GT	113	119	* 87	---	---	---	---	---	---	103	2
Pioneer Brand	P1415Q	114	---	104	---	101	---	111	* ---	94	103	4
Seed Consultants	SC 1121AM™	112	---	92	---	95	---	111	* ---	112	* 103	4
Mid-Atlantic	MA5161VIP3220EZ	116	109	* 95	---	---	---	---	---	---	102	2
Augusta	A9967	117	98	---	101	* 101	---	---	98	113	* 102	5
Mid-Atlantic	MA5155GT3VIP	115	102	* ---	---	---	---	---	---	---	102	1
FS	FS 65R87SS	115	110	* ---	98	---	100	---	100	---	102	4
Seedway	SW6760SS	112	102	* ---	91	91	115	---	109	* ---	102	5
Seed Consultants	SCS 1111Q™	111	---	113	---	108	* ---	85	---	100	102	4

Dyna-Gro	D57VC17	117	---	---	100	---	---	102	---	---	101	2			
NK Brand	NK1677-3110	116	84	112	115	*	---	90	101	101	---	100	6		
Seed Consultants	SC1122Q™	112	106	*	---	93	---	88	---	114	*	---	100	4	
Augusta	A1367	117	98	120	---	---	---	---	---	---	83	100	3		
Augusta	A6362	112	100	*	---	---	---	---	---	---	---	100	1		
NK Brand	NK1661-3120A	116	96	---	109	*	---	81	---	113	*	---	100	4	
FS	FS 62ZX1 RIB	112	111	*	---	95	---	101	---	92	---	100	4		
Seed Consultants	SCS 1188AM™	118	103	*	94	99	109	*	88	101	102	102	100	8	
Seedway	SW6540 VT2PRIB	107	122	*	---	97	97	101	---	81	---	99	5		
FS	FS 6595X RIB	115	96	---	---	89	---	108	---	105	*	---	99	4	
Seed Consultants	SCS 1170AM™	117	108	*	93	102	*	93	94	102	108	*	95	99	8
Caverndale Farms	CF 814 3000GT	112	---	---	---	---	---	---	---	---	99	99	1		
FS	FS 6406X RIB	114	79	---	119	*	---	88	---	109	*	---	99	4	
Caverndale Farms	CF 753 GTCBLL	107	---	---	---	---	---	---	---	---	98	98	1		
Progeny Ag Products	PGY 9117VT2P	117	---	94	---	86	---	97	---	114	*	98	4		
FS	FS 64SX1 RIB	114	74	---	95	---	---	117	---	103	*	---	97	4	
Redtail	RT 65T09-D1	115	102	*	---	92	---	---	---	---	---	97	2		
Seedway	SW1781SS	117	78	---	104	*	104	93	---	104	*	---	97	5	
Augusta	A7768	118	---	---	---	---	---	---	---	---	95	95	1		
Seedway	SW1579SS	115	115	*	---	92	92	76	---	99	---	95	5		
Seed Consultants	SCS 1141AM™	114	64	112	95	106	*	94	81	104	*	100	95	8	
Mid-Atlantic	MA8158SS	115	89	100	---	---	---	---	---	---	---	94	2		
Mid-Atlantic	MA5165GT3	116	85	101	---	---	---	---	---	---	---	93	2		
Progeny Ag Products	PGY 7118VT2P	118	---	76	---	100	---	---	91	---	104	93	4		
Augusta	A4463	113	---	81	---	104	*	---	---	---	---	93	2		
Caverndale Farms	CF 889 VIP 3111	117	---	---	---	---	---	---	---	---	92	92	1		
Pioneer Brand	P1847AMXT	118	---	87	---	88	---	---	103	---	88	92	4		
LG Seeds	LG66C32VT2RIB	116	---	79	---	104	---	---	---	---	---	91	2		
Redtail	RT 67T23	117	80	---	100	---	---	---	---	---	---	90	2		
Caverndale Farms	CF 794 VIP 3111	109	---	---	---	---	---	---	---	---	88	88	1		
Mid-Atlantic	MA8128VT2PRIB	112	88	---	---	---	---	---	---	---	---	88	1		
Mid-Atlantic	MA5144HDDCEZ	114	87	---	---	---	---	---	---	---	---	87	1		

Augusta	A5262	112	---	86	---	---	---	---	---	---	86	1
Partners Brand	PB 11702	117	---	---	---	---	---	---	86	---	86	1
Mid-Atlantic	MA5166GT3VIP	116	74	98	---	---	---	---	---	---	86	2
Partners Brand	PB 8600	116	---	---	---	---	---	---	84	---	84	1
Mid-Atlantic	MA5103HDDCEZ	110	84	---	---	---	---	---	---	---	84	1
Dyna-Gro	D53VC33	113	---	---	---	84	---	---	---	---	84	1
Partners Brand	PB 8580	115	---	---	---	---	---	---	83	---	83	1
LG Seeds	LG62C35VT2RIB	112	---	80	---	82	---	---	---	---	81	2

<sup>1</sup> Days to maturity provided by company; differences in maturity rating methods may exist between companies.

<sup>2</sup> Hybrids tested over more site/year combinations provide a better estimate of hybrid performance than those tested only in a single site/year location.

<sup>3</sup> Relative Ton per Acre (yield) calculated by dividing Ton per Acre for each hybrid at each site/year by the average Ton per Acre for that site/year. Numbers over 100 indicate above-average yield, 100 indicates average yield, numbers under 100 indicate below-average yield.

\* Indicates numbers similar to the highest value in that column (i.e. within one LSD of the top performer.)

Shading indicates hybrids that were in the highest yielding group in at least three site years.

Table 4. Multi-year, multi-site relative milk per ton (quality).

Brand	Hybrid	DTM per Co. <sup>1</sup>	Shenandoah Valley		Northern Piedmont		Southern Piedmont		Southwest / Mountain		Multi- Site Average	Number of Obs. <sup>2</sup>					
			2021	2020	2021	2020	2021	2020	2021	2020							
-----Relative Milk per Ton-----																	
Dyna-Gro	D58VC65	118	---	---	---	---	132	*	98	---	---	115	2				
Seed Consultants	SC1122Q™	112	101	---	110	*	---	128	*	---	102	*	110	4			
Seed Consultants	SC1112AM™	111	---	---	100	---	---	127	*	---	103	*	110	3			
Augusta	A5262	112	---	108	*	---	---	---	---	---	---	108	1				
Redtail	RT 62T83	112	99	---	114	*	---	---	---	---	---	107	2				
NK Brand	NK1661-3120A	116	104	*	---	111	*	---	---	103	*	---	106	3			
FS	FS 65R87SS	115	104	*	---	112	*	---	109	*	---	---	106	4			
Mid-Atlantic	MA5165GT3	116	-	105	*	---	---	---	---	---	---	105	1				
Caverndale Farms	CF 889 VIP 3111	117	---	---	---	---	---	---	---	104	---	104	1				
Pioneer Brand	P1415Q	114	---	107	*	---	99	---	106	*	---	100	103	4			
Progeny Ag Products	PGY 9117VT2P	117	---	107	*	---	104	*	---	98	---	103	103	4			
NK Brand	NK1748-3110	117	98	105	*	106	*	---	102	*	108	*	97	---	103	6	
Progeny Ag Products	PGY 8116SS	116	105	*	---	102	*	---	104	*	---	100	---	103	4		
Pioneer Brand	P0921AMXT	109	94	---	---	99	---	---	103	*	---	113	*	---	102	4	
FS	FS 62ZX1 RIB	112	99	---	---	110	*	---	98	---	---	101	---	102	4		
Caverndale Farms	CF 753 GTCBLL	107	---	---	---	---	---	---	---	---	102	---	102	1			
Seed Consultants	SCS 1170AM™	117	105	*	99	*	114	*	103	*	95	104	*	97	99	102	8
Mid-Atlantic	MA8141DGVT2P	114	105	*	98	---	---	---	---	---	---	---	101	---	101	2	
Seed Consultants	SCS 1141AM™	114	108	*	96	104	*	106	*	93	90	109	*	105	101	8	
Caverndale Farms	CF 794 VIP 3111	109	---	---	---	---	---	---	---	---	101	---	101	1			
Augusta	A1367	117	96	105	*	---	---	---	---	---	101	---	101	101	3		
LG Seeds	LG62C35VT2RIB	112	---	100	*	---	101	*	---	---	---	---	---	100	2		
Mid-Atlantic	MA5166GT3VIP	116	100	101	*	---	---	---	---	---	---	---	---	100	2		
Seedway	SW1579SS	115	103	*	---	96	---	---	98	---	104	*	---	100	4		
Partners Brand	PB 11702	117	---	---	---	---	---	---	---	---	100	---	---	100	1		
Pioneer Brand	P1380Q	113	103	*	95	111	*	100	90	98	98	106	100	100	8		
Mid-Atlantic	MA8128VT2PRIB	112	100	---	---	---	---	---	---	---	---	---	100	1			
Mid-Atlantic	MA5144HDDCEZ	114	100	---	---	---	---	---	---	---	---	---	100	1			
Redtail	RT 65T09-D1	115	103	*	---	97	---	---	---	---	---	---	100	2			
Mid-Atlantic	MA8158SS	115	100	100	*	---	---	---	---	---	---	---	100	2			
FS	FS 6406X RIB	114	97	---	---	101	---	---	104	*	---	96	---	100	4		
Pioneer Brand	P1847AMXT	118	---	100	*	---	100	---	---	99	---	99	100	4			
Mid-Atlantic	MA5161VIP3220EZ	116	95	104	*	---	---	---	---	---	---	---	99	2			
Seed Consultants	SC 1121AM™	112	---	94	---	---	100	*	---	100	*	---	103	99	4		
NK Brand	NK1677-3110	116	102	*	110	*	104	*	---	84	99	97	---	99	6		
Seed Consultants	SCS 1111Q™	111	---	92	---	---	92	---	---	103	*	---	109	99	4		
Augusta	A4567	117	99	---	---	---	---	---	---	---	---	---	99	1			
Augusta	A9967	117	100	---	---	97	102	*	---	---	102	*	93	99	5		
FS	FS 6595X RIB	115	103	*	---	97	---	---	99	---	94	---	98	4			
FS	FS 6818X RIB	118	100	---	---	113	*	---	82	---	98	---	98	4			
Dyna-Gro	D53VC33	113	---	---	---	---	98	---	---	---	---	---	98	1			

Seedway	SW6540 VT2PRIB	107	100	---	89	---	98	---	105	*	---	98	4	
Seedway	SW1781SS	117	101	---	96	---	96	---	98	---	---	98	4	
LG Seeds	LG66C32VT2RIB	116	---	98	---	98	---	---	---	---	---	98	2	
Caverndale Farms	CF 814 3000GT	112	---	---	---	---	---	---	---	---	97	97	1	
Progeny Ag Products	PGY 7118VT2P	118	---	105	*	---	98	---	92	---	95	97	4	
Seed Consultants	SCS 1168AM™	116	99	99	*	87	100	*	97	103	*	97	97	8
Augusta	A4463	113	---	96	---	---	98	---	---	---	---	97	2	
Dyna-Gro	D57TC29	117	---	---	---	---	---	97	---	---	---	97	1	
Mid-Atlantic	MA5155GT3VIP	115	97	---	---	---	---	---	---	---	---	97	1	
Mid-Atlantic	MA5083DCEZ	108	97	---	---	---	---	---	---	---	---	97	1	
Seedway	SW6760SS	112	96	---	103	*	---	85	---	102	*	---	97	4
Seed Consultants	SCS 1188AM™	118	95	101	*	91	103	*	87	101	*	98	98	8
Seed Consultants	SCS 1158AM™	115	103	*	96	107	*	99	80	99	97	92	97	8
Partners Brand	PB 8600	116	---	---	---	---	---	---	---	96	---	96	1	
Caverndale Farms	CF 859 VIP 3111	114	---	---	---	---	---	---	---	---	96	96	1	
Augusta	A7768	118	---	---	---	---	---	---	---	---	96	96	1	
Progeny Ag Products	PGY 2118VT2P	118	103	*	---	104	*	---	80	---	97	---	96	4
Pioneer Brand	P1197AMXT	111	---	84	---	---	98	---	102	*	---	98	96	4
Partners Brand	PB 8580	115	---	---	---	---	---	---	---	95	---	95	1	
Dyna-Gro	D57VC17	117	---	---	89	---	---	---	101	*	---	---	95	2
Mid-Atlantic	MA5101VIP3330	110	92	---	---	---	---	---	---	---	---	92	1	
Dyna-Gro	D55VC80	115	---	---	83	100	---	---	---	---	---	92	2	
Augusta	A5663-3000GT	113	91	91	---	---	---	---	---	---	---	91	2	
FS	FS 64SX1 RIB	114	100	---	73	---	90	---	---	102	*	---	91	4
Redtail	RT 67T23	117	96	---	79	---	---	---	---	---	---	88	2	
Mid-Atlantic	MA5103HDDCEZ	110	-	---	---	---	---	---	---	---	---	-	1	
Augusta	A6362	112	-	---	---	---	---	---	---	---	---	-	1	

<sup>1</sup> Days to maturity provided by company; differences in maturity rating methods may exist between companies.

<sup>2</sup> Hybrids tested over more site/year combinations provide a better estimate of hybrid performance than those tested only in a single site/year location.

<sup>3</sup> Relative Milk per Ton (quality) calculated by dividing Milk per Ton for each hybrid at each site/year by the average Milk per Ton for that site/year.

Numbers over 100 indicate above-average yield, 100 indicates average yield, numbers under 100 indicate below-average yield.

\* Indicates numbers similar to the highest value in that column (i.e. within one LSD of the top performer.)

Shading indicates hybrids that were in the highest yielding group in at least three site years.

Table 5. Multi-year, multi-site relative milk per acre (yield X quality)

Brand	Hybrid	DTM per Co. <sup>1</sup>	Shenandoah Valley		Northern Piedmont		Southern Piedmont		Southwest / Mountain		Multi-Site Average	Number of Obs. <sup>2</sup>
			2021	2020	2021	2020	2021	2020	2021	2020		
-----Relative Milk per Ton-----												
Mid-Atlantic Redtail	MA5083DCEZ	108	134	* ---	---	---	---	---	---	---	134	1
Dyna-Gro	RT 62T83	112	124	* ---	106	* ---	---	---	---	---	115	2
NK Brand	D58VC65	118	---	---	---	---	131	* 98	---	---	115	2
Mid-Atlantic	NK1661-3120A	116	100	---	122	* ---	115	* ---	117	* ---	114	4
Seed Consultants	MA5101VIP3330	110	113	* ---	---	---	---	---	---	---	113	1
Seed Consultants	SC1112AM™	111	129	* ---	109	* ---	118	* ---	95	---	113	4
Seed Consultants	SC1122Q™	112	107	* ---	101	---	112	* ---	116	* ---	109	4
Pioneer Brand	P0921AMXT	109	101	107	* 102	100	103	* ---	136	* ---	108	6
Augusta	A5262	112	---	108	* ---	---	---	---	---	---	108	1
Progeny Ag Products	PGY 8116SS	116	123	* ---	100	---	102	---	106	* ---	108	4
FS	FS 65R87SS	115	114	* ---	110	* ---	111	* ---	96	---	108	4
Seed Consultants	SCS 1111Q™	111	---	---	---	---	---	103	* ---	109	106	2
NK Brand	NK1748-3110	117	107	* 105	* 114	* ---	113	* 108	* 84	---	105	6
Mid-Atlantic	MA5165GT3	116	-	105	* ---	---	---	---	---	---	105	1
Pioneer Brand	P1380Q	113	128	* 100	* 91	99	112	* 98	103	106	105	8
Mid-Atlantic	MA5161VIP3220EZ	116	104	* 104	* ---	---	---	---	---	---	104	2
Caverndale Farms	CF 889 VIP 3111	117	---	---	---	---	---	---	---	104	104	1
Progeny Ag Products	PGY 9117VT2P	117	---	107	* ---	104	* ---	98	---	103	103	4
Seed Consultants	SCS 1170AM™	117	112	* ---	116	* 92	89	104	* 104	* 99	102	7
Seed Consultants	SC 1121AM™	112	---	99	* ---	106	* ---	100	* ---	103	102	4
Caverndale Farms	CF 753 GTCBLL	107	---	---	---	---	---	---	---	102	102	1
FS	FS 62ZX1 RIB	112	109	* ---	104	* ---	101	---	93	---	102	4
FS	FS 6818X RIB	118	118	* ---	108	* ---	78	---	102	---	101	4
Caverndale Farms	CF 794 VIP 3111	109	---	---	---	---	---	---	---	101	101	1
Seedway	SW6760SS	112	98	---	96	---	99	---	111	* ---	101	4
Progeny Ag Products	PGY 2118VT2P	118	110	* ---	117	* ---	84	---	93	---	101	4
Augusta	A4567	117	101	---	---	---	---	---	---	---	101	1
LG Seeds	LG62C35VT2RIB	112	---	100	* 101	* ---	---	---	---	---	100	2
Pioneer Brand	P1415Q	114	---	96	---	100	---	106	* ---	100	100	4

Seed Consultants	SCS 1168AM™	116	80	94	95	103	*	119	*	103	*	110	*	97	100	8
Mid-Atlantic	MA5155GT3VIP	115	100	---	---	---	---	---	---	---	---	---	---	---	100	1
FS	FS 6406X RIB	114	77	---	123	*	---	93	---	---	105	*	---	---	100	4
Pioneer Brand	P1847AMXT	118	---	99	*	---	99	---	---	99	---	---	99	99	99	4
Redtail	RT 65T09-D1	115	109	*	---	89	---	---	---	---	---	---	---	99	99	2
Seedway	SW6540 VT2PRIB	107	120	*	---	88	---	100	---	---	86	---	---	98	98	4
Pioneer Brand	P1197AMXT	111	---	95	---	---	98	---	---	102	*	---	98	98	98	4
Augusta	A9967	117	99	---	98	102	*	---	---	---	100	93	98	98	98	5
Dyna-Gro	D53VC33	113	---	---	---	---	98	---	---	---	---	---	---	98	98	1
NK Brand	NK1677-3110	116	86	110	*	119	*	---	77	99	97	---	---	98	98	6
FS	FS 6595X RIB	115	100	---	86	---	---	109	*	---	96	---	---	98	98	4
LG Seeds	LG66C32VT2RIB	116	---	98	98	---	---	---	---	---	---	---	---	98	98	2
Caverndale Farms	CF 814 3000GT	112	---	---	---	---	---	---	---	---	---	---	97	97	97	1
Progeny Ag Products	PGY 7118VT2P	118	---	105	*	---	98	---	---	92	---	---	95	97	97	4
Augusta	A1367	117	86	105	*	---	---	---	---	---	---	---	101	97	97	3
Augusta	A4463	113	---	96	---	---	98	---	---	---	---	---	---	97	97	2
Dyna-Gro	D55VC80	115	---	---	93	100	---	---	---	---	---	---	---	96	96	2
Seedway	SW1579SS	115	118	*	---	88	---	76	---	---	103	---	---	96	96	4
Caverndale Farms	CF 859 VIP 3111	114	---	---	---	---	---	---	---	---	---	---	96	96	96	1
Augusta	A7768	118	---	---	---	---	---	---	---	---	---	---	96	96	96	1
Seed Consultants	SCS 1188AM™	118	99	96	92	100	*	78	---	101	*	101	98	96	96	8
Seed Consultants	SCS 1141AM™	114	69	92	99	103	*	89	---	90	---	112	105	95	95	8
Dyna-Gro	D57TC29	117	---	84	---	---	---	106	*	---	---	---	---	95	95	2
Dyna-Gro	D57VC17	117	---	---	88	---	---	---	---	101	*	---	---	95	95	2
Augusta	A5663-3000GT	113	96	91	---	---	---	---	---	---	---	---	---	94	94	2
Mid-Atlantic	MA8158SS	115	87	100	*	---	---	---	---	---	---	---	---	94	94	2
Seedway	SW1781SS	117	80	---	100	---	---	90	---	---	102	---	---	93	93	4
Mid-Atlantic	MA8141DGVT2P	114	87	98	---	---	---	---	---	---	---	---	---	92	92	2
Seed Consultants	SCS 1158AM™	115	86	101	*	95	100	*	85	99	79	92	92	92	92	8
FS	FS 64SX1 RIB	114	74	---	70	---	---	108	*	---	104	*	---	89	89	4
Mid-Atlantic	MA8128VT2PRIB	112	88	---	---	---	---	---	---	---	---	---	---	88	88	1
Mid-Atlantic	MA5166GT3VIP	116	74	101	*	---	---	---	---	---	---	---	---	87	87	2
Partners Brand	PB 11702	117	---	---	---	---	---	---	---	---	87	---	---	87	87	1
Mid-Atlantic	MA5144HDDCEZ	114	84	---	---	---	---	---	---	---	---	---	---	84	84	1

Partners Brand	PB 8600	116	---	---	---	---	---	---	81	---	81	1
Partners Brand	PB 8580	115	---	---	---	---	---	---	79	---	79	1
Redtail	RT 67T23	117	69	---	80	---	---	---	---	---	75	2
Mid-Atlantic	MA5103HDDCEZ	110	-	---	---	---	---	---	---	---	-	1†
Augusta	A6362	112	-	---	---	---	---	---	---	---	-	1†

<sup>1</sup> Days to maturity provided by company; differences in maturity rating methods may exist between companies.

<sup>2</sup> Hybrids tested over more site/year combinations provide a better estimate of hybrid performance than those tested only in a single site/year location.

<sup>3</sup> Relative Milk per Ton (quality) calculated by dividing Milk per Ton for each hybrid at each site/year by the average Milk per Ton for that site/year.

Numbers over 100 indicate above-average yield, 100 indicates average yield, numbers under 100 indicate below-average yield.

\* Indicates numbers similar to the highest value in that column (i.e. within one LSD of the top performer).

† Hybrids entered but with inadequate seed to replant at SV site.

Shading indicates hybrids that were in the highest yielding group in at least three site years.



Table 6. Corn silage test results at the Southern Piedmont AREC, Blackstone, VA in 2021.

Brand	Hybrid	DTM <sup>1</sup>	DM at Harvest	Yield at 35% DM	DM Yield	Crude Protein	ADF	NDF	NDF Digest.	NE <sub>L</sub>	TDN	Milk2006	Milk2006
		Days	%	ton/acre	ton/acre	-----%				Mcal/lb	%	lb milk/ton	lb milk/acre
Dyna-Gro Seed Consultants	D58VC65	118	34.4	25.2	8.8	7.9	27.0	46.7	62.2	0.57	52.3	2088	17057 *
Seed Consultants	SC1168AM™	116	33.2	28.9	10.1	8.0	27.3	46.4	65.2	0.51	43.2	1533	15510
Seed Consultants	SC1112AM™	111	32.4	22.9	8.0	8.5	24.3	43.4	64.3	0.56	51.0	2009	15354
NK Brand	NK1661-3120A	116	32.7	19.3	6.8	8.2	24.2	43.3	62.1	0.60 *	55.0 *	2269 *	14987
NK Brand	NK1748-3110	117	33.2	26.0	9.1	8.5	25.3	45.1	62.1	0.52	44.6	1614	14657
Pioneer Brand Seed Consultants	P1380Q	113	32.7	29.6 *	10.3 *	8.0	27.6	48.3	65.6 *	0.49	41.4	1430	14593
Seed Consultants	SC1122Q™	112	34.4	21.0	7.3	8.2	23.3 *	42.8 *	63.3	0.57	51.4	2024	14591
FS	FS 65R87SS	115	33.2	24.0	8.4	6.9	25.0	43.9	61.9	0.54	46.3	1726	14362
FS	FS 6595X RIB	115	35.5	25.7	9.0	8.8	24.0	43.2	63.2	0.51	44.6	1572	14160
FS	FS 64SX1 RIB	114	35.6	27.9	9.8	8.2	26.8	46.7	64.1	0.49	41.7	1419	14000
Dyna-Gro	D57TC29	117	32.8	25.9	9.1	9.0	27.0	44.7	64.9	0.51	43.7	1531	13802
Pioneer Brand	P0921AMXT	109	33.0	23.7	8.3	8.7	25.9	44.5	63.3	0.52	44.9	1623	13418
Progeny Ag Products	PGY 8116SS	116	33.3	22.9	8.0	8.9	24.1	44.4	62.8	0.53	45.2	1647	13292
FS	FS 62ZX1 RIB	112	33.9	24.0	8.4	8.8	26.4	45.0	63.4	0.51	43.9	1556	13176
Seedway	SW6540 VT2PRIB	107	35.3	24.0	8.4	7.8	24.5	45.3	64.0	0.51	43.9	1559	13032
Seedway	SW6760SS	112	35.4	27.4	9.6	8.8	26.9	47.5	64.7	0.48	40.7	1350	12890
FS	FS 6406X RIB	114	32.2	21.0	7.4	8.6	24.8	45.2	62.2	0.53	45.0	1651	12142
Seedway	SW1781SS	117	34.5	22.1	7.7	8.4	25.2	46.3	62.7	0.51	43.1	1523	11667
Seed Consultants	SC1141AM™	114	34.2	22.5	7.9	8.4	25.7	46.2	65.2	0.50	42.6	1476	11571
Seed Consultants	SC1170AM™	117	33.7	22.4	7.8	8.4	25.7	46.9	63.6	0.50	42.6	1497	11528
Seed Consultants	SC1158AM™	115	36.0 *	25.4	8.9	8.1	27.3	48.3	64.9	0.47	39.4	1268	11090
Progeny Ag Products	PGY 2118VT2P	118	35.1	24.5	8.6	8.7	27.0	50.0	63.1	0.47	38.9	1263	10866
Seed Consultants	SC1188AM™	118	34.4	21.1	7.4	8.8	26.2	47.4	65.1	0.48	41.0	1373	10143
FS	FS 6818X RIB	118	33.3	22.8	8.0	8.5	28.3	50.6	62.4	0.47	39.1	1298	10121
NK Brand	NK1677-3110	116	34.1	21.4	7.5	8.6	28.6	48.3	64.1	0.48	40.2	1330	10008
Seedway	SW1579SS	115	33.9	18.2	6.4	9.3 *	25.0	44.8	62.9	0.51	43.9	1546	9853

Site Average	33.9	23.8	8.3	8.4	25.9	46.0	63.6	0.51	44.2	1584	12995
LSD (0.10)	2.1	5.3	1.8	1.1	2.8	3.8	2.7	0.06	7.7	486	3573
C.V.	4.9	17.2	17.2	10.0	8.3	6.4	3.2	8.78	13.5	24	21

<sup>1</sup>Days to maturity provided by company; differences in maturity rating methods may exist between companies.

\* Indicates numbers not significantly different from the highest (or lowest for ADF and NDF) value in that column, i.e. within one LSD of the top performer.

Note: Hybrids are listed in descending order of lb milk/acre.

Table 7. Two-year corn silage test results at the Southern Piedmont AREC, Blackstone, VA 2020 and 2021.

Brand	Hybrid	DTM <sup>1</sup>	DM at Harvest	Yield at 35% DM	DM Yield	Crude Protein	ADF	NDF	NDF Digest.	NE <sub>L</sub>	TDN	Milk2006	Milk2006
		Days	%	ton/acre	ton/acre	-----%				Mcal/lb	%	lb milk/ton	lb milk/acre
NK Brand	NK1748-3110	117	29.6 *	20.1 *	7.0 *	8.8 *	31.0 *	52.2 *	64.8 *	0.57 *	55.2 *	2199 *	14228 *
Dyna-Gro	D58VC65	118	29.0 *	17.6 *	6.2 *	9.3 *	33.1 *	54.6 *	61.1	0.58 *	57.5 *	2347 *	13382 *
Seed Consultants	SC1168AM™	116	28.4 *	18.7 *	6.6 *	9.2 *	33.2	54.6 *	65.7 *	0.56 *	55.1 *	2176 *	12485 *
Pioneer Brand	P1380Q	113	29.4 *	19.5 *	6.8 *	9.2 *	32.1 *	53.8 *	60.8	0.55 *	52.4 *	2057 *	12401 *
Seed Consultants	SC1170AM™	117	29.2 *	17.1 *	6.0 *	9.1 *	31.4 *	53.6 *	64.4 *	0.55 *	53.3 *	2087 *	11338
Seed Consultants	SC1158AM™	115	32.1 *	19.1 *	6.7 *	8.5 *	33.0 *	55.0 *	63.4 *	0.53 *	50.7 *	1913 *	11271
Seed Consultants	SC1188AM™	118	31.3 *	17.0 *	6.0 *	9.6 *	29.9 *	51.0 *	62.5	0.53 *	50.0 *	1904 *	10366
NK Brand	NK1677-3110	116	26.6	14.9 *	5.2 *	9.7 *	34.8	58.1 *	66.7 *	0.55 *	55.5 *	2150 *	10272
Seed Consultants	SC1141AM™	114	30.5 *	16.9 *	5.9 *	9.4 *	30.0 *	52.2 *	60.3	0.53 *	49.0 *	1844 *	9900
	Site Average		29.6	17.9	6.3	9.2	32.0	53.9	63.3	0.55	53.2	2075	11738
	LSD (0.10)		4.5	7.4	2.6	1.2	1.7	7.2	4.6	0.06	10.7	608	2566
	C.V.		16.3	44.3	44.3	13.8	18.6	14.4	7.9	11.30	21.7	32	24

<sup>1</sup>Days to maturity provided by company; differences in maturity rating methods may exist between companies.

\* Indicates numbers not significantly different from the highest (or lowest for ADF and NDF) value in that column, i.e. within one LSD of the top performer.

Note: Hybrids are listed in descending order of lb milk/acre.

Table 8. Corn silage test results at the Northern Piedmont Center, Orange, VA in 2021.

Brand	Hybrid	DTM <sup>1</sup>	DM at Harvest	Yield at 35% DM	DM Yield	Crude Protein	ADF	NDF	NDF Digest.	NE <sub>L</sub>	TDN	Milk2006	Milk2006
		Days	%	ton/acre	ton/acre	-----%-----			Mcal/lb	%	lb milk/ton	lb milk/acre	
FS	FS 6406X RIB	114	42.7	18.3	* 6.4	* 7.9	31.2	* 52.2	* 69.0	* 0.44	* 40.6	* 1594	* 10426
NK Brand	NK1661-3120A	116	40.9	16.8	* 5.9	* 8.3	29.5	* 48.3	* 69.8	* 0.31	23.4	* 1745	* 10332
NK Brand Progeny Ag Products Seed	NK1677-3110	116	38.0	17.7	* 6.2	* 8.7	32.5	55.5	72.8	* 0.33	27.0	* 1626	* 10081
Consultants	PGY 2118VT2P	118	42.9	17.3	* 6.1	* 9.0	* 30.9	* 51.8	* 68.5	* 0.47	* 43.7	* 1635	* 9851
Consultants	SC1170AM™	117	40.2	15.7	* 5.5	* 9.0	* 30.6	* 50.0	* 70.6	* 0.34	27.4	* 1783	* 9799
NK Brand	NK1748-3110	117	40.2	16.6	* 5.8	* 8.6	31.7	52.7	* 71.9	* 0.38	31.7	* 1670	* 9661
FS Seed	FS 65R87SS	115	43.0	15.1	5.3	8.5	30.3	* 49.6	* 71.0	* 0.45	* 41.0	* 1758	* 9302
Consultants	SC1112AM™	111	42.0	17.1	* 6.0	* 9.7	* 30.5	* 51.0	* 66.5	0.44	* 40.9	* 1574	* 9244
FS	FS 6818X RIB	118	42.3	14.9	5.2	8.5	29.6	* 50.0	* 69.5	* 0.38	32.1	* 1774	* 9112
Redtail	RT 62T83	112	40.9	14.3	5.0	9.2	* 29.3	* 47.5	* 74.2	* 0.38	31.7	* 1785	* 8971
FS	FS 62ZX1 RIB	112	41.4	14.6	5.1	8.5	29.8	* 50.0	* 70.9	* 0.46	* 38.9	* 1733	* 8788
Pioneer Brand Seed	P0921AMXT	109	42.9	15.5	5.4	8.6	31.2	* 52.4	* 70.7	* 0.35	28.9	1561	* 8607
Consultants	SC1122Q™	112	41.5	14.4	5.0	9.5	* 28.3	* 47.6	* 67.8	0.42	* 38.2	* 1723	* 8523
Seedway Progeny Ag Products Seed	SW1781SS	117	43.2	16.0	* 5.6	* 8.0	32.4	54.2	74.3	* 0.36	31.8	* 1507	* 8439
Consultants	PGY 8116SS	116	45.4	15.2	5.3	8.2	30.8	* 51.3	* 66.7	0.35	28.8	1598	* 8431
Consultants	SC1141AM™	114	41.2	14.7	5.1	8.8	* 30.4	* 51.3	* 68.5	* 0.41	* 36.9	* 1639	* 8398
Augusta	A9967	117	43.6	15.6	* 5.5	* 8.3	30.9	* 51.3	* 73.6	* 0.36	29.0	1516	* 8309
Seedway Seed	SW6760SS	112	43.3	14.1	4.9	8.8	* 30.7	* 50.3	* 73.9	* 0.43	* 39.0	* 1623	* 8109
Consultants Seed	SC1158AM™	115	42.3	13.7	4.8	8.5	31.9	51.4	* 71.7	* 0.36	29.6	1684	* 8060
Consultants	SC1168AM™	116	42.7	17.1	* 6.0	* 8.7	32.3	55.7	71.9	* 0.43	* 38.9	* 1368	7997
Dyna-Gro Seed	D55VC80	115	45.5	17.5	* 6.1	* 8.3	32.9	57.5	69.5	* 0.45	* 40.9	* 1308	7861
Consultants Pioneer Brand	SC1188AM™	118	43.6	15.2	5.3	8.3	32.9	56.0	74.4	* 0.33	25.7	1429	7732
Brand	P1380Q	113	39.7	12.7	4.5	9.0	* 30.0	* 50.2	* 72.7	* 0.44	* 39.8	* 1745	* 7657
Redtail	RT 65T09-D1	115	40.0	14.1	4.9	8.3	32.9	54.9	69.5	* 0.42	* 37.7	* 1516	* 7522
Seedway	SW1579SS	115	47.3	14.1	4.9	8.3	30.0	* 51.2	* 68.4	* 0.40	* 34.0	* 1508	* 7423
Dyna-Gro	D57VC17	117	46.1	15.3	5.4	8.1	32.5	55.0	72.6	* 0.34	27.6	1394	7400
Seedway	SW6540												
Seedway	VT2PRIB	107	46.0	14.9	5.2	8.5	33.2	55.6	72.5	* 0.33	26.6	1398	7400
FS	FS 6595X RIB	115	44.5	13.7	4.8	8.5	30.9	* 52.8	* 70.6	* 0.42	* 38.3	* 1525	* 7251
Redtail	RT 67T23	117	43.6	15.4	5.4	8.1	36.3	60.4	70.7	* 0.35	28.1	1248	6743
FS	FS 64SX1 RIB	114	44.5	14.6	5.1	7.8	35.9	61.1	65.8	0.40	* 36.3	* 1154	5924

Site Average	42.7	15.4	5.4	8.5	31.4	52.6	70.7	0.39	33.8	1571	8445
LSD (0.10)	3.0	2.8	1.0	0.9	3.1	5.9	6.5	0.09	11.8	308	2110
C.V.	5.7	14.8	14.8	8.2	8.1	9.0	7.5	18.90	28.5	16	20

<sup>1</sup>Days to maturity provided by company; differences in maturity rating methods may exist between companies.

\* Indicates numbers not significantly different from the highest (or lowest for ADF and NDF) value in that column, i.e. within one LSD of the top performer.

Note: Hybrids are listed in descending order of lb milk/acre.

Table 9. Two-year corn silage test results at the Northern Piedmont Center, Orange, VA 2020 and 2021.

Brand	Hybrid	DTM <sup>1</sup>	DM at Harvest	Yield at 35% DM	DM Yield	Crude Protein	ADF	NDF	NDF Digest.	NE <sub>L</sub>	TDN	Milk2006	Milk2006
		Days	%	ton/acre	ton/acre	-----%-----				Mcal/lb	%	lb milk/ton	lb milk/acre
Seed Consultants	SC1158AM™	115	37.5	17.6 *	6.1 *	7.2	31.2	50.7	68.3 *	0.54 *	52.3 *	2501 *	16181 *
Pioneer Brand Seed Consultants	P1380Q	113	36.6	17.2 *	6.0 *	7.8 *	29.6 *	48.9 *	68.3 *	0.56 *	54.6 *	2439 *	15736 *
Dyna-Gro	D55VC80	117	36.2	16.3 *	5.7 *	8.0 *	29.6 *	47.8 *	66.9	0.52 *	49.0 *	2512 *	14476
Augusta Seed Consultants	A9967	115	39.8 *	18.3 *	6.4 *	7.3	31.2	52.5	66.2 *	0.56 *	55.1 *	2218	14424
Seed Consultants	SC1170AM™	117	38.2 *	16.9 *	5.9 *	7.4	30.5	49.5 *	68.7 *	0.52	49.5 *	2350 *	14307
Seed Consultants	SC1141AM™	114	37.7	16.6 *	5.8 *	7.9 *	29.5 *	48.1 *	66.4	0.53 *	51.8 *	2360 *	14294
Seed Consultants	SC1188AM™	118	39.6 *	17.1 *	6.0 *	7.4	31.9	52.5	71.0 *	0.48	45.0	2197	13906
Seed Consultants	SC1168AM™	116	37.7	17.2 *	6.0 *	7.3	31.8	53.6	69.1 *	0.55 *	54.4 *	2256 *	13496
Site Average			37.9	17.1	6.0	7.5	30.7	50.5	68.1	0.53	51.5	2354	14602
LSD (0.10)			1.8	2.1	0.7	0.6	1.7	3.7	3.3	0.05	6.7	175	1684
C.V.			5.6	14.2	14.2	8.4	6.4	8.5	11.3	1.54	15.1	9	13

<sup>1</sup>Days to maturity provided by company; differences in maturity rating methods may exist between companies.

\* Indicates numbers not significantly different from the highest (or lowest for ADF and NDF) value in that column, i.e. within one LSD of the top performer.

Note: Hybrids are listed in descending order of lb milk/acre.

Table 10. Corn silage test results at the Shenandoah Valley location, Windcrest Holsteins, Timberville, VA in 2021.

Brand	Hybrid	DTM <sup>1</sup>	DM at Harvest	Yield at 35% DM	DM Yield	Crude Protein	ADF	NDF	NDF Digest.	NE <sub>L</sub>	TDN	Milk2006	Milk2006
		Days	%	ton/acre	ton/acre	-----%				Mcal/lb	%	lb milk/ton	lb milk/acre
Mid-Atlantic	MA5083DCEZ	108	42.2	17.5 *	7.9 *	10.8	26.8	48.1	58.8	0.60 *	62.5 *	2617 *	20600 *
Seed Consultants	SC1112AM™	111	37.7	15.6 *	7.0 *	10.9	23.3 *	47.9	64.8 *	0.63 *	65.8 *	2832 *	19774 *
Pioneer Brand	P1380Q	113	38.7	15.7 *	7.1 *	10.9	26.8	48.1	61.7 *	0.62 *	64.8 *	2771 *	19666 *
Redtail	RT 62T83	112	41.3	15.9 *	7.2 *	10.2	23.6 *	47.0 *	60.4	0.60 *	63.4 *	2667 *	19072 *
Progeny Ag Products	PGY 8116SS	116	38.2	14.8 *	6.7 *	10.7	28.0	47.3	61.1 *	0.63 *	65.5 *	2824 *	18837 *
Seedway	SW6540 VT2PRIB	107	38.7	15.4 *	6.9 *	11.2 *	23.3 *	49.7	59.1	0.61 *	63.4 *	2686 *	18476 *
Seedway	SW1579SS	115	40.7	14.6 *	6.6 *	10.6	26.2	47.8	63.9 *	0.62 *	65.3 *	2786 *	18167 *
FS	FS 6818X RIB	118	40.2	15.0 *	6.7 *	11.1	27.0	48.4	60.2	0.61 *	63.7 *	2698 *	18068 *
FS	FS 65R87SS	115	42.4 *	13.9 *	6.3 *	9.4	25.7	47.4	62.4 *	0.62 *	65.3 *	2803 *	17519 *
Mid-Atlantic	MA5101VIP3330	110	43.5 *	15.6 *	7.0 *	11.1	26.2	49.3	60.4	0.58	60.5 *	2471 *	17374 *
Seed Consultants	SC1170AM™	117	38.8	13.6 *	6.1 *	10.9	26.0	48.1	59.8	0.63 *	65.3 *	2827 *	17266 *
Progeny Ag Products	PGY 2118VT2P	118	44.4 *	13.5 *	6.1 *	10.6	29.5	47.7	65.6 *	0.62 *	65.9 *	2782 *	16906
FS	FS 62ZX1 RIB	112	46.2 *	14.1 *	6.3 *	10.1	26.6	47.3	63.0 *	0.60 *	63.8 *	2673 *	16745
Redtail	RT 65T09-D1	115	40.2	12.9 *	5.8 *	9.7	25.8	49.0	62.3 *	0.62 *	65.0 *	2779 *	16712
NK Brand	NK1748-3110	117	41.2	13.8 *	6.2 *	10.9	24.0 *	48.7	60.1	0.60 *	63.1 *	2653 *	16519
Seed Consultants	SC1122Q™	112	41.1	13.4 *	6.0 *	11.3 *	25.3	48.4	61.7 *	0.61 *	64.3 *	2727 *	16401
Mid-Atlantic	MA5161DCVIPEZ	116	42.7 *	13.9 *	6.2 *	11.5 *	25.8	49.0	58.3	0.59 *	62.0 *	2568 *	16040
Augusta	A4567	117	42.2	13.1 *	5.9 *	11.1	24.6 *	48.0	60.0	0.61 *	63.4 *	2676 *	15594
Pioneer Brand	P0921AMXT	109	41.9	13.5 *	6.1 *	11.5 *	25.2	47.4	59.5	0.59 *	61.6 *	2543 *	15504
NK Brand	NK1661-3120A	116	41.1	12.1 *	5.5 *	10.1	24.5 *	46.4 *	61.7 *	0.62 *	65.2 *	2798 *	15422
Mid-Atlantic	MA5155GT3VIP	115	39.1	13.0 *	5.8 *	11.5 *	27.9	50.7	59.3	0.60 *	62.5 *	2614 *	15351
FS	FS 6595X RIB	115	41.1	12.2 *	5.5 *	10.8	25.2	49.1	61.9 *	0.62 *	65.0 *	2769 *	15313
Seed Consultants	SC1188AM™	118	40.4	13.0 *	5.9 *	12.1 *	27.2	50.0	59.5	0.59 *	62.0 *	2566 *	15270
Augusta	A9967	117	42.7 *	12.4 *	5.6 *	10.3	25.4	45.6 *	63.4 *	0.61 *	64.1 *	2707 *	15265
Seedway	SW6760SS	112	40.6	12.9 *	5.8 *	11.2 *	26.8	48.5	57.6	0.60 *	62.1 *	2598 *	15063
Augusta	A5663	113	43.1 *	15.1 *	6.8 *	11.6 *	22.6 *	50.0	58.1	0.57	60.4 *	2453 *	14690
Mid-Atlantic	MA8128VT2PRIB	112	40.2	11.2 *	5.0 *	11.3 *	26.9	48.4	61.8 *	0.61 *	64.1 *	2707 *	13586

Mid-Atlantic	MA8158SSRIB	115	40.0	11.3	*	5.1	*	11.3	*	28.2	49.3	59.9	0.61	*	63.9	*	2694	*	13447
Mid-Atlantic	MA8141DGV2PRIB	114	37.8	10.6		4.8		11.1		26.1	48.5	61.5	* 0.63	*	65.5	*	2828	*	13393
Augusta	A1367	117	41.8	12.4	*	5.6	*	12.3	*	24.4	* 49.2	59.0	0.59	*	62.3	*	2582	*	13259
NK Brand	NK1677-3110	116	39.7	10.7		4.8		11.3	*	25.6	48.6	62.5	* 0.61	*	64.5	*	2737	*	13244
Seed Consultants	SC1158AM™	115	40.7	10.6		4.8		10.8		25.7	48.7	62.8	* 0.62	*	64.9	*	2766	*	13237
Mid-Atlantic	MA5144HDDCEZ	114	40.9	11.0	*	4.9	*	10.5		27.8	47.5	57.4	0.61	*	63.2	*	2688	*	12846
Seedway	SW1781SS	117	40.9	9.9		4.5		11.0		27.8	48.1	62.5	* 0.61	*	64.4	*	2728	*	12265
Seed Consultants	SC1168AM™	116	40.9	10.1		4.6		11.2	*	25.7	49.6	60.4	0.61	*	63.6	*	2676	*	12240
FS	FS 6406X RIB	114	42.4	*	10.0	4.5		10.8		25.6	47.9	59.1	0.60	*	62.7	*	2625	*	11836
Mid-Atlantic	MA5166GT3VIP	116	37.7	9.4		4.2		11.4	*	25.1	* 48.8	56.7	0.61	*	63.6	*	2708	*	11432
FS	FS 64SX1 RIB	114	40.3	9.4		4.2		11.1		25.9	48.6	61.2	* 0.61	*	63.5	*	2689	*	11332
Redtail	RT 67T23	117	41.1	10.1		4.5		10.8		24.3	* 48.8	56.1	0.60	*	62.0	*	2600	*	10673
Seed Consultants	SC1141AM™	114	37.8	8.1		3.7		9.7		24.2	* 47.6	62.9	* 0.64	*	66.9	*	2924	*	10661
Augusta	A6362	112	33.9	12.7	*	5.7	*	.	.	.	.	.	.	.	.	.	.	.	.
Mid-Atlantic	MA5165HDGT3	116	40.4	10.8		4.8		.	.	.	.	.	.	.	.	.	.	.	.
Mid-Atlantic	MA5103HDDCEZ	110	40.5	10.7		4.8		.	.	.	.	.	.	.	.	.	.	.	.
	Site Average		40.6	12.7		5.7		10.9		25.8	48.4	60.7	0.61		63.8		2696		15377
	LSD (0.10)		3.9	6.8		2.4		1.1		2.4	1.7	4.8	0.06		7.7		486		3573
	C.V.		6.6	25.0		25.0		7.5		6.9	2.6	5.9	3.44		3.5		6		26

<sup>1</sup>Days to maturity provided by company; differences in maturity rating methods may exist between companies.

\* Indicates numbers not significantly different from the highest (or lowest for ADF and NDF) value in that column, i.e. within one LSD of the top performer.

Note: Hybrids are listed in descending order of lb milk/acre.

. Denotes missing data, quality samples were damaged.



Table 11. Two-year corn silage test results at the Shenandoah Valley location, Windcrest Holsteings, Timberville, VA 2020 and 2021.

Brand	Hybrid	DTM <sup>1</sup>	DM at Harvest	Yield at 35% DM	DM Yield	Crude Protein	ADF	NDF	NDF Digest.	NE <sub>L</sub>	TDN	Milk2006	Milk2006
		Days	%	ton/acre	ton/acre	-----%				Mcal/lb	%	lb milk/ton	lb milk/acre
Augusta	A1367	117	37.9	22.4 *	8.3 *	10.4	25.1 *	46.3 *	57.1	0.63 *	65.0 *	2830 *	25478 *
Pioneer Brand	P1380Q	113	38.3	23.6 *	9.2 *	10.6	26.1 *	48.0	61.3 *	0.61	64.0 *	2711	24813 *
Mid-Atlantic	MA5165HDGT3	116	38.6	17.7	6.7	9.0	26.4	45.1 *	59.9 *	0.64 *	66.2 *	2904 *	24785 *
NK Brand	NK1748-3110	117	38.9	19.4 *	7.5 *	9.7	25.0 *	46.4 *	58.6	0.62 *	64.6 *	2783 *	21173 *
Mid-Atlantic	MA5161DCVIPEZ	116	38.3	20.0 *	7.5 *	10.3	25.8 *	47.0	58.0	0.62 *	64.5 *	2774 *	20770 *
Seed Consultants	SC1170AM™	117	38.3	19.6 *	7.3 *	9.9	25.8 *	46.3 *	58.8 *	0.62 *	64.6 *	2776 *	20534 *
Mid-Atlantic	MA8141DGVT2PRIB	114	37.9	19.5 *	7.4 *	10.1	25.8 *	47.3	59.8 *	0.62 *	64.7 *	2777 *	20304
Mid-Atlantic	MA5166GT3VIP	116	37.0	20.1 *	7.3 *	10.0	25.6 *	46.5 *	55.9	0.62 *	64.2 *	2769 *	20211
NK Brand	NK1677-3110	116	37.4	17.8	6.8	10.1	26.0 *	46.6 *	59.9 *	0.64 *	65.9 *	2871 *	19972
Seed Consultants	SC1158AM™	115	40.0 *	19.0 *	7.2 *	10.1	25.9 *	47.7	61.4 *	0.61	64.2 *	2719	19514
Seed Consultants	SC1141AM™	114	38.1	19.6 *	7.2 *	9.3	24.9 *	47.0	61.4 *	0.62 *	64.8 *	2767 *	18879
Seed Consultants	SC1168AM™	116	39.5	17.9	6.8	10.4	25.6 *	48.2	60.9 *	0.61	64.0 *	2707	18472
Mid-Atlantic	MA8158SSRIB	115	39.1	17.7	6.8	10.2	27.4	48.2	59.3 *	0.61	64.1 *	2730 *	18327
Seed Consultants	SC1188AM™	118	38.8	17.2	6.8	10.9 *	26.6	48.4	59.8 *	0.60	63.3	2664	18266
Augusta	A5663	113	41.1 *	18.6	7.2	9.8	24.8 *	48.2	57.0	0.58	61.0	2505	17642
Pioneer Brand	P0921AMXT	109	41.9 *	13.5	6.1	11.5 *	25.2 *	47.4	59.5 *	0.59	61.6	2543	15504
	Site Average		38.8	19.0	7.3	10.1	25.8	47.2	59.3	0.62	64.2	2739	20290
	LSD (0.10)		2.2	4.8	1.9	0.7	1.5	1.7	2.7	0.03	2.4	184	5168
	C.V.		5.2	24.6	24.6	7.0	3.7	4.8	5.0	4.29	3.5	6	24

<sup>1</sup>Days to maturity provided by company; differences in maturity rating methods may exist between companies.

\* Indicates numbers not significantly different from the highest (or lowest for ADF and NDF) value in that column, i.e. within one LSD of the top performer.

Note: Hybrids are listed in descending order of lb milk/acre.

Table 12. Corn silage test results at the Southwest Virginia AREC, Glade Spring, VA in 2021.

Brand	Hybrid	DTM <sup>1</sup>	DM at Harvest	Yield at 35% DM	DM Yield	Crude Protein	ADF	NDF	NDF Digest.	NE <sub>L</sub>	TDN	Milk2006	Milk2006
		Days	%	ton/acre	ton/acre	-----%-----				Mcal/lb	%	lb milk/ton	lb milk/acre
Pioneer Brand	P0921AMXT	109	50.6 *	37.8 *	13.2 *	8.7 *	23.7 *	47.0 *	66.5 *	0.55 *	53.5	2095 *	27643 *
NK Brand	NK1661-3120A	116	44.3	35.3 *	12.3 *	7.8	27.4 *	46.5 *	57.9	0.52	50.6	1922	23702 *
Seed Consultants	SC1122Q™	112	44.5	35.5 *	12.4 *	7.8	28.5 *	48.4 *	60.5	0.52	50.1	1899	23631 *
Seed Consultants	SC1141AM™	114	40.4	32.3 *	11.3 *	8.4 *	25.7 *	45.1 *	58.1	0.54 *	52.1	2024 *	22799
Seedway	SW6760SS	112	45.5	33.9 *	11.9 *	8.6 *	27.3 *	51.0	57.7	0.52	50.2	1905	22610
Seed Consultants	SC1168AM™	116	45.8	35.1 *	12.3 *	7.5	30.1	50.4	59.2	0.50	48.7	1810	22316
Progeny Ag Products	PGY 8116SS	116	44.6	32.9 *	11.5 *	7.9	28.5 *	47.9 *	58.7	0.51	49.6	1867	21602
FS	FS 6406X RIB	114	42.3	34.0 *	11.9 *	7.5	29.7	53.0	58.3	0.50	48.2	1784	21233
Seed Consultants	SC1170AM™	117	46.2	33.5 *	11.7 *	7.9	28.6	51.0	58.8	0.50	48.8	1799	21153
FS	FS 64SX1 RIB	114	48.5 *	31.9	11.2	7.6	28.1 *	50.3	59.8	0.52	50.1	1892	21058
Seedway	SW1579SS	115	43.5	30.9	10.8	8.0	26.4 *	46.9 *	58.8	0.52	50.9	1940	20972
Pioneer Brand	P1380Q	113	43.3	32.9 *	11.5 *	7.6	29.7	48.5 *	57.8	0.51	49.1	1827	20966
Seedway	SW1781SS	117	46.9 *	32.5 *	11.4 *	7.6	29.2	46.7 *	59.9	0.51	49.0	1822	20792
FS	FS 6818X RIB	118	45.0	32.4 *	11.3 *	7.8	29.4	50.6	58.8	0.51	48.9	1825	20762
Seed Consultants	SC1188AM™	118	45.8	31.8	11.1	8.4 *	27.7 *	47.1 *	60.0	0.51	49.1	1823	20422
Augusta	A9967	117	44.4	30.4	10.7	8.1 *	28.1 *	47.3 *	60.7	0.52	50.3	1901	20202
NK Brand	NK1677-3110	116	44.0	31.4	11.0	7.6	29.5	49.1 *	60.9	0.50	48.7	1807	19615
FS	FS 6595X RIB	115	43.1	32.6 *	11.4 *	7.7	31.2	50.5	60.0	0.50	47.9	1757	19546
FS	FS 65R87SS	115	40.8	31.1	10.9	7.9	31.6	53.4	58.4	0.51	48.4	1824	19468
Seed Consultants	SC1112AM™	111	38.7	28.5	10.0	8.1 *	30.9	47.7 *	60.8	0.52	50.0	1925	19250
FS	FS 62ZX1 RIB	112	46.7 *	28.8	10.1	8.2 *	28.6	51.7	57.2	0.51	49.7	1873	18968
Progeny Ag Products	PGY 2118VT2P	118	48.1 *	29.7	10.4	8.5 *	27.9 *	50.2	57.6	0.50	48.8	1815	18849
Partners Brand	PB 11702	117	42.8	26.8	9.4	8.8 *	28.6	49.7 *	58.5	0.51	49.5	1865	17570
Seedway	SW6540 VT2PRIB	107	43.8	25.3	8.9	7.5	28.3 *	50.0 *	58.5	0.53	51.1	1964 *	17381
NK Brand	NK1748-3110	117	44.7	27.1	9.5	8.0	28.7	51.1	58.1	0.50	48.5	1797	17121
Partners Brand	PB 8600	116	40.8	26.2	9.2	8.4 *	29.3	49.4 *	59.2	0.50	48.3	1793	16475
Seed Consultants	SC1158AM™	115	45.4	25.4	8.9	7.9	27.4 *	48.8 *	62.1 *	0.50	49.1	1812	16085
Partners Brand	PB 8580	115	44.3	25.9	9.1	7.9	30.0	50.7	60.5	0.50	48.1	1772	16060

Site Average	44.5	31.1	10.9	8.0	28.6	49.3	59.4	0.51	49.5	1862	20295
LSD (0.10)	4.1	5.5	1.9	0.7	3.4	5.1	3.6	0.02	2.4	146	4099
C.V.	7.6	14.3	14.3	7.4	9.7	4.9	4.9	3.59	3.9	6	16

<sup>1</sup>Days to maturity provided by company; differences in maturity rating methods may exist between companies.

\* Indicates numbers not significantly different from the highest (or lowest for ADF and NDF) value in that column, i.e. within one LSD of the top performer.

Note: Hybrids are listed in descending order of lb milk/acre.

Table 13. Two-year corn silage test results at the Southwest Virginia AREC, Glade Spring, VA 2020 and 2021.

Brand	Hybrid	DTM <sup>1</sup>	DM at Harvest	Yield at 35% DM	DM Yield	Crude Protein	ADF	NDF	NDF Digest.	NE <sub>L</sub>	TDN	Milk2006	Milk2006
		Days	%	ton/acre	ton/acre	-----%-----				Mcal/lb	%	lb milk/ton	lb milk/acre
Seed Consultants	SC1141AM™	114	38.5	33.3 *	11.7	8.5 *	26.3 *	45.4 *	61.9 *	0.61 *	62.4 *	2646 *	30904 *
Seed Consultants	SC1158AM™	115	43.8 *	35.0 *	12.3	8.0	27.0 *	47.3 *	62.2 *	0.55	56.1	2209	28130 *
Seed Consultants	SC1168AM™	116	43.1 *	35.9 *	12.6	7.9	28.7	49.1	60.9 *	0.55	55.7	2212	27933 *
Seed Consultants	SC1170AM™	117	41.9 *	32.8 *	11.5	7.9	28.2	49.7	62.0 *	0.57	58.6 *	2378 *	26996 *
Augusta	A9967	117	45.3 *	33.8 *	11.8 *	8.1 *	27.2 *	45.7 *	61.5 *	0.55	55.8	2213	26447
Pioneer Brand Seed Consultants	P1380Q	113	40.7	32.0 *	11.2	8.0	28.7	47.9	61.2 *	0.57	57.3	2330 *	25880
Seed Consultants	SC1188AM™	118	42.7 *	33.0 *	11.6	8.3 *	27.2 *	47.2 *	60.3 *	0.55	55.8	2227	25862
	Site Average		42.3	33.7	11.8	8.1	27.6	47.5	61.4	0.56	57.4	2317	27450
	LSD (0.10)		4.0	6.1	2.1	0.4	2.4	3.5	2.9	0.03	2.7	186	4106
	C.V.		10.3	19.5	19.5	5.8	9.2	8.1	5.1	5.23	5.2	9	16

<sup>1</sup>Days to maturity provided by company; differences in maturity rating methods may exist between companies.

\* Indicates numbers not significantly different from the highest (or lowest for ADF and NDF) value in that column, i.e. within one LSD of the top performer.

Note: Hybrids are listed in descending order of lb milk/acre.

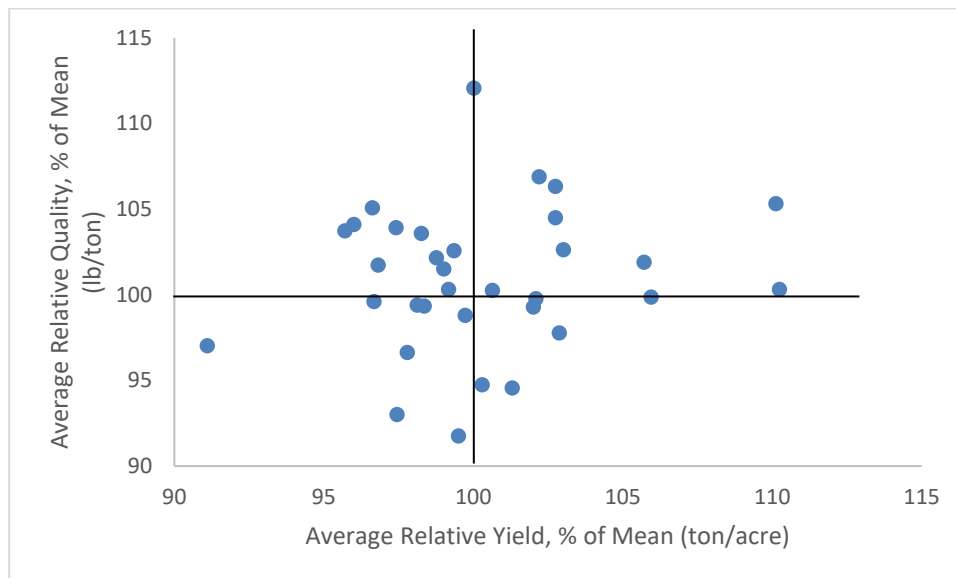


Figure 1. Average relative yield versus quality across sites, 2021

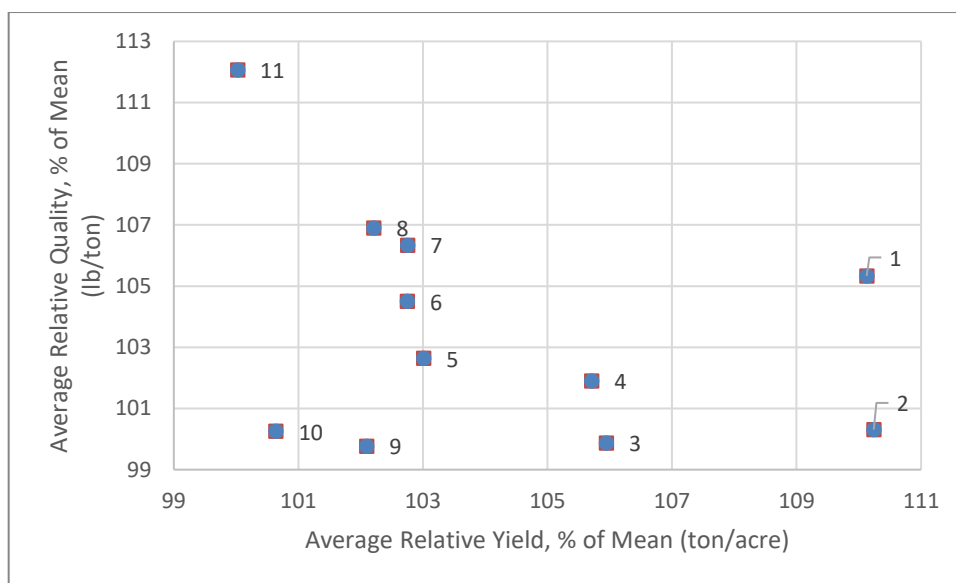


Figure 2. High-yielding and high-quality hybrids in at least 3 site/year combinations in 2021

1	Seed Consultants	SC1112AM™
2	Seed Consultants	SC1122Q™
3	NK Brand	NK1661-3120A
4	FS	FS 65R87SS
5	Pioneer Brand	P1415Q
6	Progeny Ag Products	PGY 8116SS
7	NK Brand	NK1748-3110
8	Pioneer Brand	P0921AMXT
9	FS	FS 62ZX1 RIB
10	Augusta	A1367
11	Pioneer Brand	P1380Q

Visit Virginia Cooperative Extension: [ext.vt.edu](http://ext.vt.edu)

Virginia Cooperative Extension is a partnership of Virginia Tech, Virginia State University, the U.S. Department of Agriculture, and local governments. Its programs and employment are open to all, regardless of age, color, disability, gender, gender identity, gender expression, national origin, political affiliation, race, religion, sexual orientation, genetic information, military status, or any other basis protected by law.

